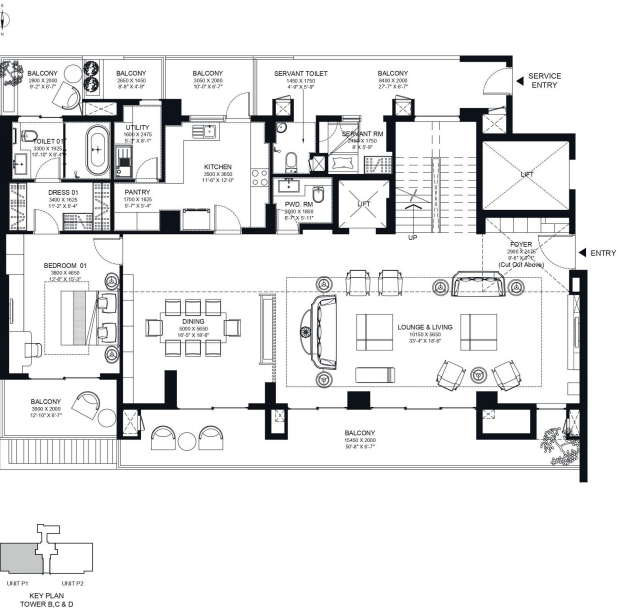


# PENTHOUSE TYPE B LVL 1

Carpet Area: 376.49 sqm/ 4052.54 sqft  
Balcony/ Terrace Area: 248.45 sqm/ 2674.32 sqft  
Super Area: 877.86 sqm/ 9449.29 sqft

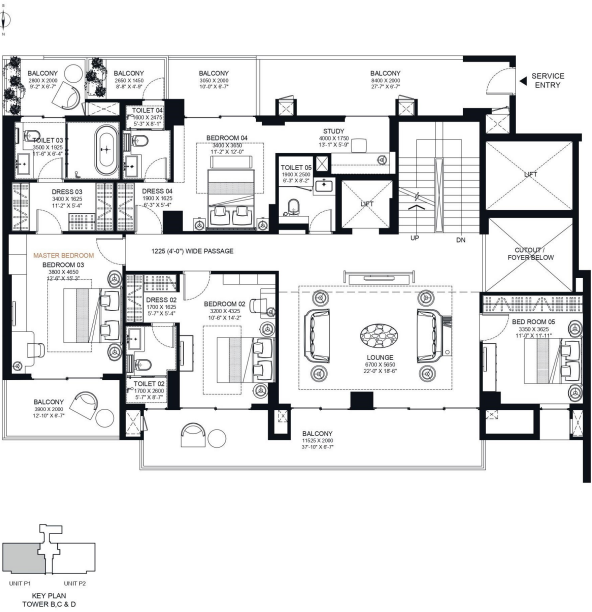


## ADVANTAGES

This floor is designed with formal living & dining areas, one bedroom and servant room

- 1) The living room is spread over 57.35 sqm area with attached 28.25 sqm dining space
- 2) This is large enough space to host a party of 40 people
- 3) An expansive kitchen of 12.78 sqm area, with pantry
- 4) Balconies spread over 65.51 sqm

# PENTHOUSE TYPE B LVL 2

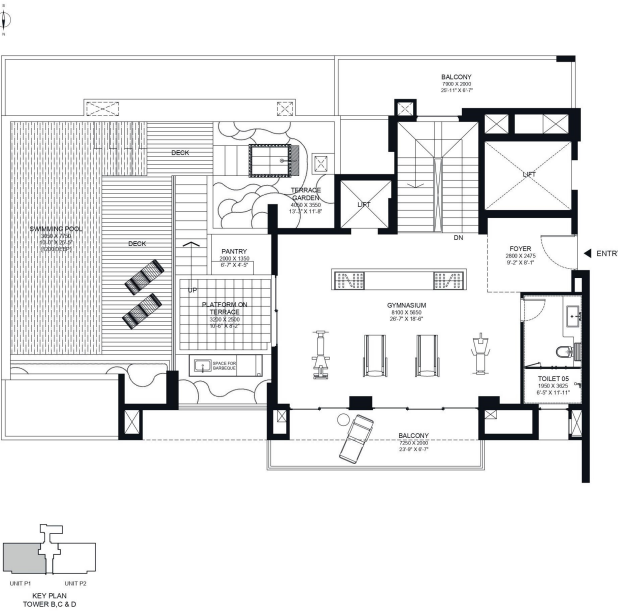


## ADVANTAGES

This floor is designed for bedrooms, a family lounge connected with an elevator and grand staircase

- 1) A tastefully designed master bedroom, with balconies on both sides
- 2) 5.53 sqm of classy his & her master closet area is lined with open shelving & display cabinets.
- 3) Enjoy two balconies of 13.40 sqm, with master bedroom
- 4) The balconies spread over 60.59 sqm

# PENTHOUSE TYPE B LVL 3



## ADVANTAGES

The Leisure Floor: An envious lifestyle

- 1) An exclusive gym of 45.77 sqm area on the terrace
- 2) A provision for you to barbeque with your locally produced herbs during the perfect winter afternoons
- 3) A Private swimming pool of 26.33 sqm on top of the roof
- 4) Tastefully designed pool deck areas surrounded by lush landscape and an outdoor shower for convenience